

Lowton East Neighbourhood Development Forum (LENDF)
Minutes to the Meeting held on Monday 14th November 2016 at Lowton Social Club.

<http://www.lendf.co.uk>

Present:

- Chairman – Ed Thwaite (Ed T), Secretary – Irene Thomson (IT)
- Cllr K Houlton, Cllr E Houlton, and Cllr J Grundy

No. of Attendees = 29

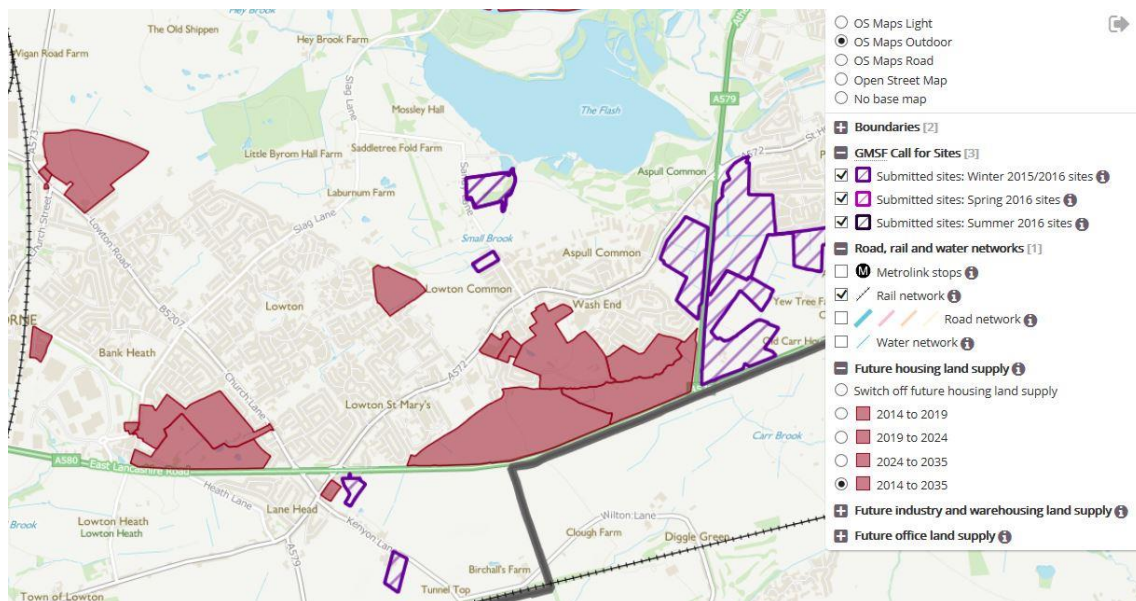
1. **Minutes from last meeting** – Not read at meeting but copies had been sent out by email, posted onto Facebook, and paper copies were available. LENDF Bank Statement available during the meeting.

2. **Short Notices**

- Texaco Garage, Newton Road – The 24hr Alcohol Licence is due before the Licencing Board on Tuesday 15th Nov. Ed Thwaite asked those present if they wanted LENDF to object – the majority said yes.
[Post Meeting Note:] The application was granted.
- 'Victorian Day' to be held on 26th November – Organised by Culcheth Parish Council, with fair rides and other amusements also fundraising for the scout group.
- Diggle Green – Thank you to those who have been sending LENDF emails of when they have reported incidents of odour. Though it does appear that Wigan Council have not been very responsive in assisting residents with feedback or action.
- Andy Burnham – still waiting for a response regarding travellers.

3. **Greater Manchester Spatial Framework** [Click here to view map details](#)

Using a presentation screen to show the map in detail the meeting discussed the various portions of land either already allocated for house building or have been put forward either by developers/landowners/businesses in the recent 'Call for Sites' exercise. The GMSF is in a 'draft' stage and not all new sites added will be given permission.

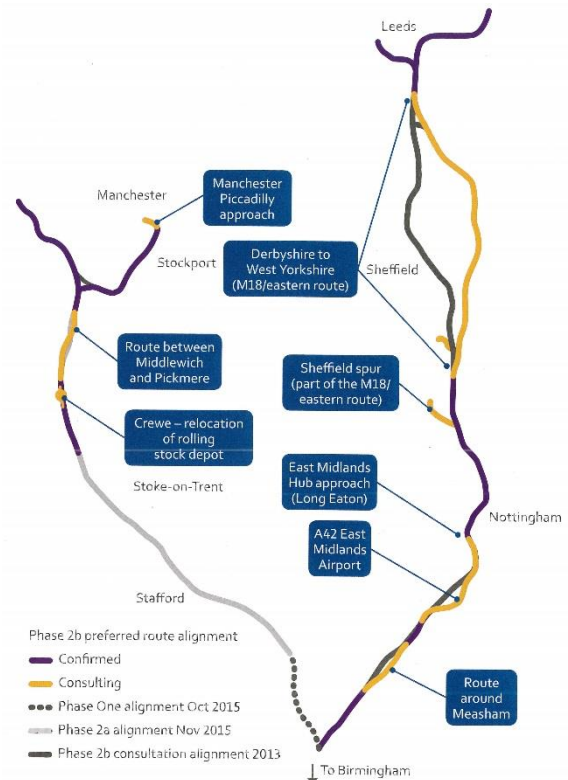


4. **HS2 – Announcement of Route – 15th Nov**

The route of the line has been amended so that it avoids Byrom Hall and Lightshaw Hall. [Click here](#) for details. The Depot proposed for Golborne will now be moved to an area outside of Crewe. The line through Lowton will mainly be in a 'cut & cover' tunnel and will be completed by 2033.

Raj from the HS2 North West Engagement Team will be invited to the LENDF meeting on 9th January next year to discuss the impacts the route will have on properties and businesses in Lowton, and to find out what mitigation measures will be put into place.

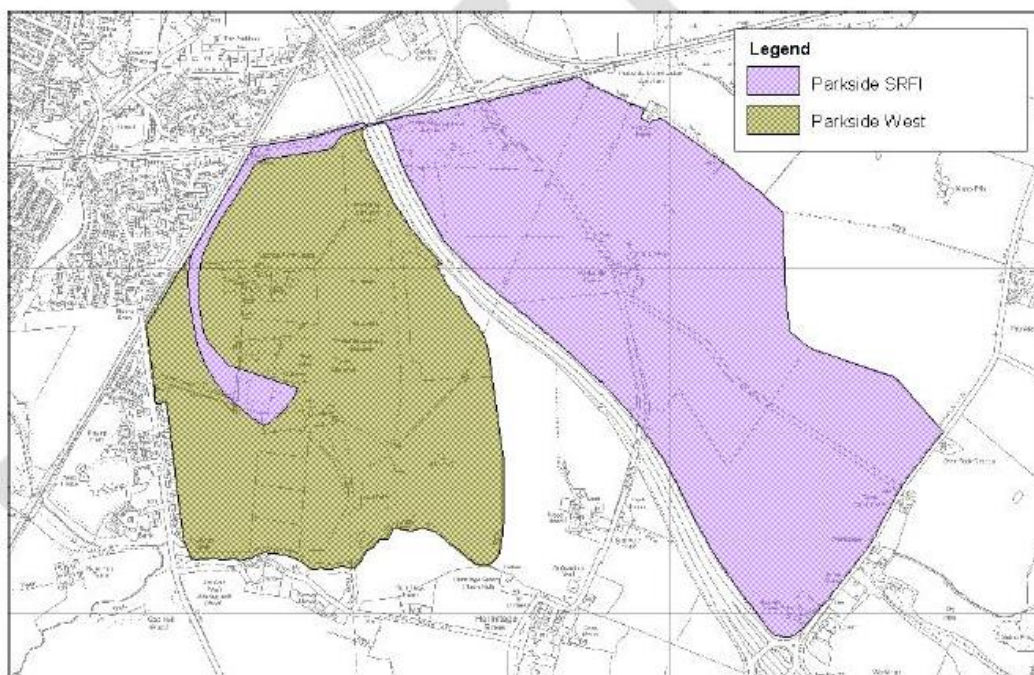
Road infrastructure in Lowton is already struggling (with new housing developments underway, plus more in the planning stages) that the 'construction' of HS2 will be a serious issue. The northern end of Atherleigh Bypass is being incorporated into development schemes but the extension of the southern end, at Lowton, needs to be brought forward as point of urgency to relief existing congestion, plus it is well known that Leigh requires better access to the A580 and M6. A new voluntary organisation called Leigh Neighbourhood Forum have applied to the Council to develop a 'Leigh Neighbourhood Plan'. For more details [click here](#).



5. **Parkside, Newton**

St Helens Council are continuing to work on their draft Local Plan (2018-2033) and the image below is an extract from the Plan which shows how much land they want to take out of the Green Belt for the Parkside development. [Parkside Action Group](#) have all the updates and relevant details on their website.

Figure 4.3: Land Allocated for SRFI at Parkside



6. Florida Farm North, Haydock

Proposals have been put forward for an industrial/warehousing development off the A580 at Haydock. [Click here](#) for more information.

7. Newton Train Station – Latest Update

Ray Bent kindly keeps us up to date with the changes/improvements at Newton Train Station. The new car park is still incomplete and Ray is communicating with Gerard Woods at St Helens Council who is the Team Leader for the Planning Policy Team. Mr Woods is still waiting for the release of the Compulsory Purchase Order from the Secretary of State's Office. There are contractors in place ready and waiting for the go ahead.

8. Winwick Lane, Weight Restrictions

Lane Head South Residents Group have met again with Andy Burnham and representatives from Wigan/Warrington/St Helens Council. Winwick Lane is now officially de-primed and the following actions are to take place before the next meeting in March:

- The preparatory work for the de-priming signage has been completed and will be installed asap
- Wigan and Warrington to gather traffic data in March next year
- Presentations by the Councillors need to be put to the Parish Councils concerned
- Any areas that are in breach of EU air quality standards need to be highlighted
- Once the relevant data has been collated a decision will be taken by Wigan Council whether to request a Permanent or Experimental Traffic Order.

9. Civic Hall (the Rose Centre)

Lowton Civic Hall has been SOLD.

As yet we do not know who the new owners are but as the building is already registered as an Asset of Community Value, LENDF have approached the seller (8th Wonder) to enquire what it would cost for the community to 'take over' the running of the Hall (depending on who the new owners are). Bookings are still being taken for functions, etc, up until 2017.

10. Any Other Business

Christmas Tree Lighting – Lane Head. Sunday 4th Dec at 4pm. Carol singing, mince pies, and mulled wine.

11. Next LENDF Monthly Meeting

Monday 12th December 2016 @ 7.30pm (Lowton Social Club)

Should you find any omissions or discrepancies in these minutes please contact me on lendf99@gmail.com and let me know as soon as possible and the errors will be rectified.

Irene Thomson – Secretary, LENDF